



FCR **Plus** Series

Upgraded versatile premium FCR series with higher throughput and enhanced quality





FCR XG5000 Plus

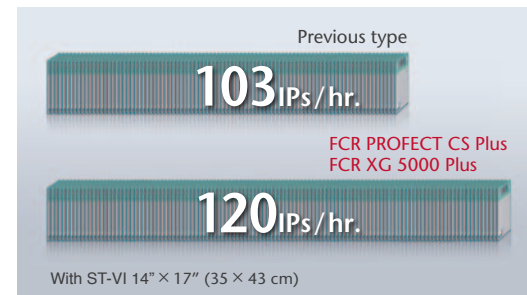
FCR PROTECT ONE Plus

FCR PROTECT CS Plus

The world's fastest processing capacity and further versatility examinations.

The Fastest Processing Capacity in the world*

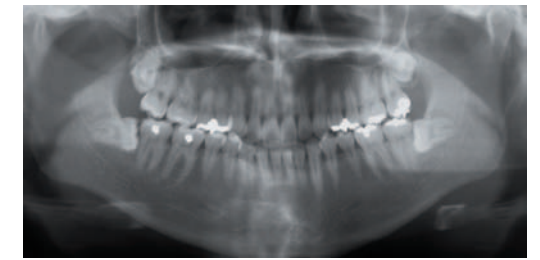
The FCR PROTECT CS Plus and FCR XG 5000 Plus have realized the world's fastest processing speed of 120 IPs/hr., a remarkable progress from the previous 103 IPs/hr. These two models reduce the examination time drastically, ensuring stress-free workflows.



* AS of end of August 2012 (according to Fujifilm's research)

A Multi-purpose FCR

The FCR Plus series now enables processing of pantomography exposures* (15 × 30 cm), in addition to standard and long-view exposures, making a wider range of examinations possible.



* 15 × 30 cm IP needs optional IP Adapter

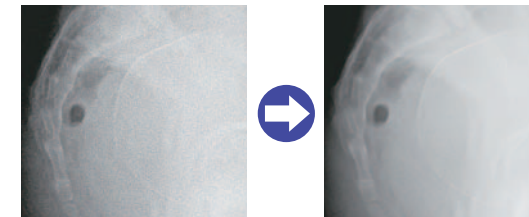
Enhanced Image Processing

"Image Intelligence™" – a set of sophisticated digital image-processing software technologies available through Fujifilm's Console – processes image data and optimizes final output.



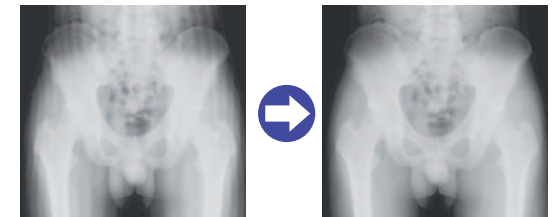
FNC Flexible Noise Control

Provides a non-grainy image by mainly isolating and suppressing the noise for the signal.



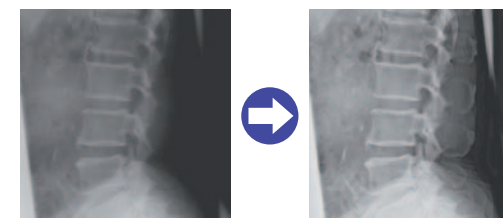
GPR Grid Pattern Removal

Removes the stationary grid patterns thus preventing Moiré from being generated resulting in easier diagnosis.



MFP*1 Multi-Frequency Processing

Enhances FCR images. All diagnostic scopes will be enhanced except for noise.



PEM*2 Pattern Enhancement Processing for Mammography

As an optional software specifically developed for mammographic imaging, PEM enhancement processing improves the conspicuity of micro-calcifications.

*2 Optional function for MAMMOASCENT AWS-c, CONSOLE ADVANCE and CR Console

*1 Optional function for CONSOLE ADVANCE and CR Console

For Extended Purpose



120
IPs/hr.
15×30
Pantomo
50μ
Mammo
Dual-Side
Reading

PROTECT CS Plus

The highest grade model in the FCR series. Superior image quality with 20 pixel/mm sampling pitch mammography and pediatric imaging with four-cassette stacker.



15×30
Pantomo
50μ
Mammo
Dual-Side
Reading

PROTECT ONE Plus

High-resolution one-stacker FCR with 20 pixel/mm sampling pitch for digital mammography and pediatric imaging.

For General Purpose

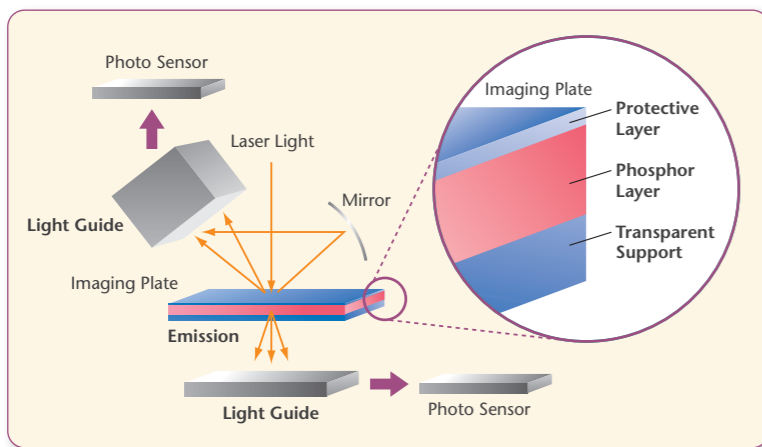


120
IPs/hr.
15×30
Pantomo

XG5000 Plus

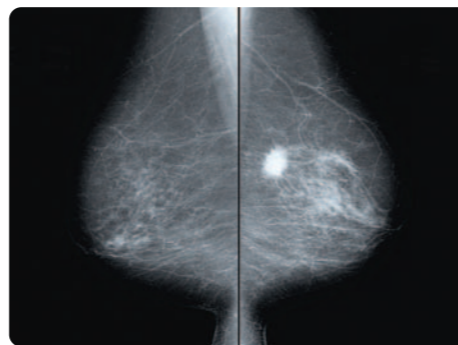
A highly-efficient general-purpose FCR reader that offers superior quality images and comfortable workflow for medical staff.

Dual-Side Reading Technology



The Dual-Side Imaging Plate (IP) Reading technology allows the use of a thicker phosphor layer on the transparent base, thereby increasing DQE (Detective Quantum Efficiency) by collecting the emissions from both sides of the IP.

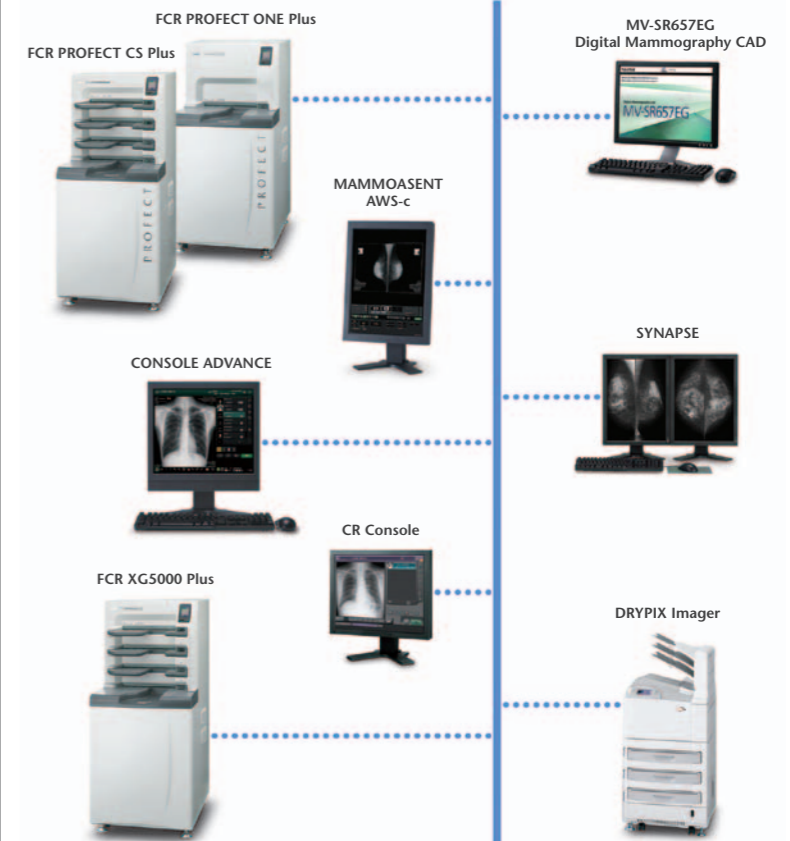
High-precision Images for Various Needs



As High DQE is realized by the FUJIFILM's Dual-side Reading Technology, with its low dose exposure, the FCR PROTECT CS Plus and the FCR PROTECT ONE Plus relieve patients' burden during X-ray examinations. Incorporated with the FUJIFILM proprietary image processing technology (Image Intelligence™), high resolution image reading with the 20 pixel/mm sampling pitch delivers excellent quality images in versatile diagnosis areas. For example, they are suitable for diagnosis areas requiring high-quality images even with low dose exposure, such as mammography, pediatrics, follow-ups and tests using a catheter.

FCR System Configuration

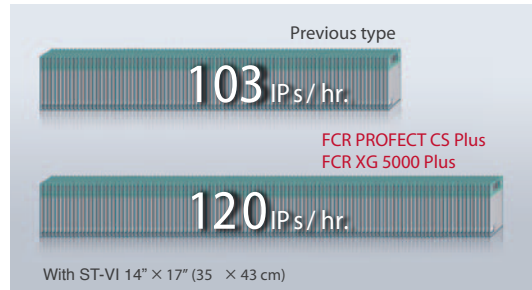
Optimal configurations suited to various applications realize smooth workflow



FCR Plus Series

The Fastest Processing Capacity in the world *

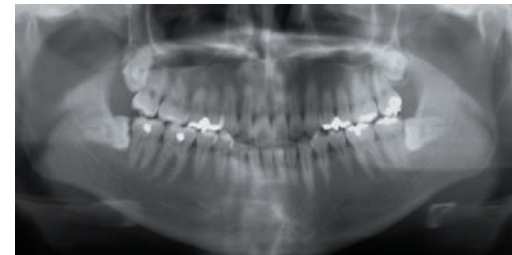
The FCR PROTECT CS Plus and FCR XG 5000 Plus have realized the world's fastest processing speed of 120 IPs/hr., a remarkable progress from the previous 103 IPs/hr. These two models reduce the examination time drastically, ensuring stress-free workflows.



* AS of end of August 2012 (according to Fujifilm's research)

A Multi-purpose FCR

The FCR Plus series now enables processing of pantomography exposures* (15 x 30 cm), in addition to standard and long-view exposures, making a wider range of examinations possible.



* 15 x 30 cm IP needs optional IP Adapter

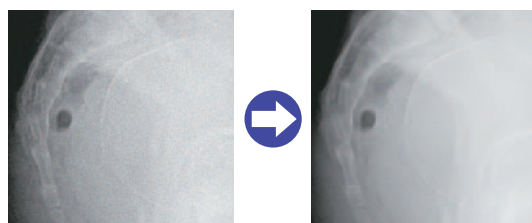
Enhanced Image Processing

"Image Intelligence"[™] – a set of sophisticated digital image-processing software technologies available through Fujifilm's Console – processes image data and optimizes final output.



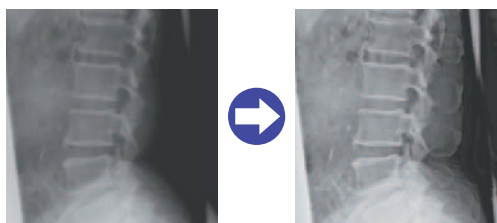
FNC Flexible Noise Control

Provides a non-grainy image by mainly isolating and suppressing the noise for the signal.



MFP^{*1} Multi-Frequency Processing

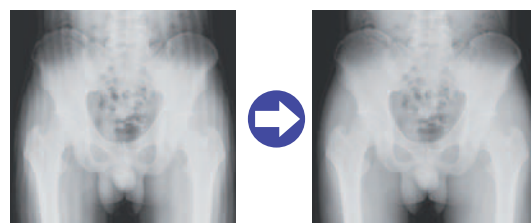
Enhances FCR images. All diagnostic scopes will be enhanced except for noise.



*1 Optional function for CONSOLE ADVANCE and CR Console

GPR Grid Pattern Removal

Removes the stationary grid patterns thus preventing Moiré from being generated resulting in easier diagnosis.



PEM^{*2} Pattern Enhancement Processing for Mammography

As an optional software specifically developed for mammographic imaging, PEM enhancement processing improves the conspicuity of micro-calcifications.

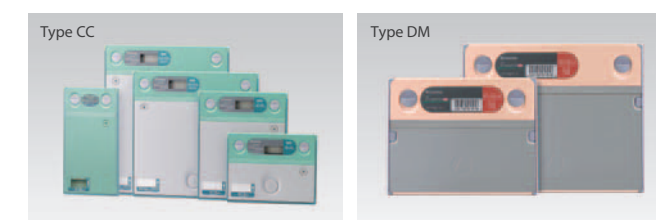
*2 Optional function for MAMMOASCENT AWS-c, CONSOLE ADVANCE and CR Console

FCR Plus Series Specifications

	FCR PROTECT CS Plus (Model: CR-IR 363)	FCR PROTECT ONE Plus (Model: CR-IR 368)	FCR XG5000 Plus (Model: CR-IR 362)
Processing Capacity by ST-VI 14" x 17" (35 x 43cm)	120 IPs/hr.	67 IPs/hr.	120 IPs/hr.
Time Required for IP Feed/Load by ST-VI 14" x 17" (35 x 43cm)	54 sec.	54 sec.	54 sec.
Reading Specification	5, 10, 20 pixels/mm	5, 10, 20 pixels/mm	5, 10 pixels/mm
Time to Start on Display by ST-VI 14" x 17" (35 x 43cm)	37 sec.	37 sec.	37 sec.
Time to Print on DRYPIX7000 by ST-VI 14" x 17" (35 x 43cm)	115 sec.	115 sec.	115 sec.
Number of Stacker	4	1	4
Applicable Console	CR Console, CONSOLE ADVANCE, MAMMOASCENT AWS-c	CR Console, CONSOLE ADVANCE, MAMMOASCENT AWS-c	CR Console, CONSOLE ADVANCE
Main connectable Imagers	DRYPIX Plus/7000	DRYPIX Plus/7000	DRYPIX Plus/7000/Lite/PRIMA
Network	10 Base T/100 Base TX	10 Base T/100 Base TX	10 Base T/100 Base TX
Dimensions (W x D x H)	655 x 740 x 1480mm (26" x 29" x 58")	655 x 740 x 1330mm (26" x 29" x 52")	655 x 740 x 1480mm (26" x 29" x 58")
Weight	270kg (595lbs.)	230kg (507lbs.)	270kg (595lbs.)
Power Supply Conditions	Single phase 50-60Hz AC120-240V ±10% 7A (max)	Single phase 50-60Hz AC120-240V ±10% 7A (max)	Single phase 50-60Hz AC120-240V ±10% 7A (max)
Environmental Conditions	Operating Conditions: • Temperature: 15-30°C • Humidity: 40-80%RH (No dew condensation) Non-operating Conditions: • Temperature: 0-45°C • Humidity: 10-90%RH (No dew condensation)	Operating Conditions: • Temperature: 15-30°C • Humidity: 40-80%RH (No dew condensation) Non-operating Conditions: • Temperature: 0-45°C • Humidity: 10-90%RH (No dew condensation)	Operating Conditions: • Temperature: 15-30°C • Humidity: 40-80%RH (No dew condensation) Non-operating Conditions: • Temperature: 0-45°C • Humidity: 10-90%RH (No dew condensation)
Supplies	Imaging Plate: • ST-VI (Standard): 14" x 17", 14" x 14", 10" x 12", 8" x 10", 24 x 30cm, 18 x 24cm, 15 x 30cm* • HR-V (High Resolution): 24 x 30cm, 18 x 24cm • ST-BD (Standard Dual-Side Reading): 24 x 30cm, 18 x 24cm • HR-BD (High Resolution Dual-Side Reading for Mammography): 24 x 30cm, 18 x 24cm IP Cassette: • Type CC: 14" x 17", 14" x 14", 10" x 12", 8" x 10", 24 x 30cm, 18 x 24cm • Type CH: 24 x 30cm, 18 x 24cm • Type DS: 24 x 30cm, 18 x 24cm • Type DM: 24 x 30cm, 18 x 24cm • Type LC: 35.4 x 124.5cm, 35.4 x 101.7cm, 35.4 x 83.0cm, 25.2 x 58.0cm, 24.0 x 57.0cm	Imaging Plate: • ST-VI (Standard): 14" x 17", 14" x 14", 10" x 12", 8" x 10", 24 x 30cm, 18 x 24cm, 15 x 30cm* • HR-V (High Resolution): 24 x 30cm, 18 x 24cm • ST-BD (Standard Dual-Side Reading): 24 x 30cm, 18 x 24cm • HR-BD (High Resolution Dual-Side Reading for Mammography): 24 x 30cm, 18 x 24cm IP Cassette: • Type CC: 14" x 17", 14" x 14", 10" x 12", 8" x 10", 24 x 30cm, 18 x 24cm • Type CH: 24 x 30cm, 18 x 24cm • Type DS: 24 x 30cm, 18 x 24cm • Type DM: 24 x 30cm, 18 x 24cm • Type LC: 35.4 x 124.5cm, 35.4 x 101.7cm, 35.4 x 83.0cm, 25.2 x 58.0cm, 24.0 x 57.0cm	Imaging Plate: • ST-VI (Standard): 14" x 17", 14" x 14", 10" x 12", 8" x 10", 24 x 30cm, 18 x 24cm, 15 x 30cm* • HR-V (High Resolution): 24 x 30cm, 18 x 24cm IP Cassette: • Type CC: 14" x 17", 14" x 14", 10" x 12", 8" x 10", 24 x 30cm, 18 x 24cm • Type LC: 35.4 x 124.5cm, 35.4 x 101.7cm, 35.4 x 83.0cm, 25.2 x 58.0cm, 24.0 x 57.0cm

* 15 x 30 cm IP needs optional IP Adapter

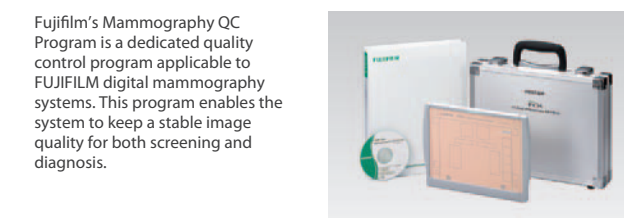
IP Cassette with Imaging Plate



CC cassette with ST-VI for general imaging

DM Cassette with IP HR-BD for Dual-Side Mammography

Mammography QC Program



Fujifilm's Mammography QC Program is a dedicated quality control program applicable to FUJIFILM digital mammography systems. This program enables the system to keep a stable image quality for both screening and diagnosis.

These equipment are class 1 laser products (IEC 60825-1:2001)



Specifications are subject to change without notice. All brand names or trademarks are the property of their respective owners. In some countries, regulatory approval may be required to import medical devices. For the availability of these products, please contact your local sales representatives.



FUJIFILM supports the Pink Ribbon Campaign for early detection of breast cancer



DIVISIÓN DE EQUIPOS E INFRAESTRUCTURA PARA SERVICIOS MÉDICOS HOSPITALARIOS
www.seijiroyazawa.com
info@seijiroyazawa.com



FCR Solutions

FCR PROTECT CS/ ONE FCR XG-5000



FCR Plus Series

Upgraded versatile premium FCR series with higher throughput and enhanced quality



XG5000 Plus | PROTECT CS Plus | PROTECT ONE Plus